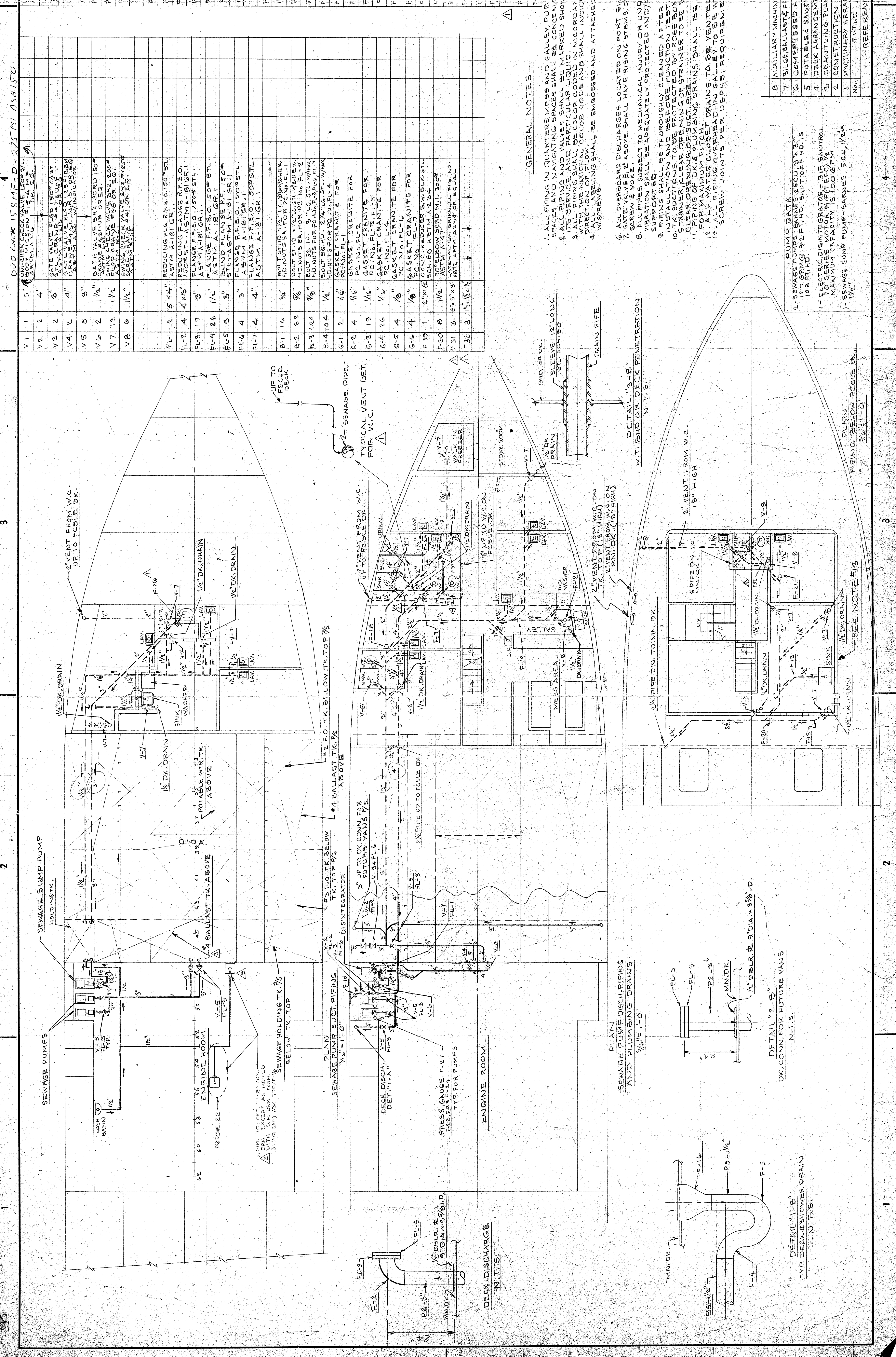


BILL OF MATERIALS

QTY	DESCRIPTIONS	COM. ITEM	DATE
1	PIPE BULK ST. SCH. 80 SMS		
2	ASTM A 234		
3	ASTM A 234		
4	ASTM A 234		
5	ASTM A 234		
6	ASTM A 234		
7	ASTM A 234		
8	ASTM A 234		
9	ASTM A 234		
10	ASTM A 234		
11	ASTM A 234		
12	ASTM A 234		
13	ASTM A 234		
14	ASTM A 234		
15	ASTM A 234		
16	ASTM A 234		
17	ASTM A 234		
18	ASTM A 234		
19	ASTM A 234		
20	ASTM A 234		
21	ASTM A 234		
22	ASTM A 234		
23	ASTM A 234		
24	ASTM A 234		
25	ASTM A 234		
26	ASTM A 234		
27	ASTM A 234		
28	ASTM A 234		
29	ASTM A 234		
30	ASTM A 234		
31	ASTM A 234		
32	ASTM A 234		
33	ASTM A 234		
34	ASTM A 234		
35	ASTM A 234		
36	ASTM A 234		
37	ASTM A 234		
38	ASTM A 234		
39	ASTM A 234		
40	ASTM A 234		
41	ASTM A 234		
42	ASTM A 234		
43	ASTM A 234		
44	ASTM A 234		
45	ASTM A 234		
46	ASTM A 234		
47	ASTM A 234		
48	ASTM A 234		
49	ASTM A 234		
50	ASTM A 234		
51	ASTM A 234		
52	ASTM A 234		
53	ASTM A 234		
54	ASTM A 234		
55	ASTM A 234		
56	ASTM A 234		
57	ASTM A 234		
58	ASTM A 234		
59	ASTM A 234		
60	ASTM A 234		
61	ASTM A 234		
62	ASTM A 234		
63	ASTM A 234		
64	ASTM A 234		
65	ASTM A 234		
66	ASTM A 234		
67	ASTM A 234		
68	ASTM A 234		
69	ASTM A 234		
70	ASTM A 234		
71	ASTM A 234		
72	ASTM A 234		
73	ASTM A 234		
74	ASTM A 234		
75	ASTM A 234		
76	ASTM A 234		
77	ASTM A 234		
78	ASTM A 234		
79	ASTM A 234		
80	ASTM A 234		
81	ASTM A 234		
82	ASTM A 234		
83	ASTM A 234		
84	ASTM A 234		
85	ASTM A 234		
86	ASTM A 234		
87	ASTM A 234		
88	ASTM A 234		
89	ASTM A 234		
90	ASTM A 234		
91	ASTM A 234		
92	ASTM A 234		
93	ASTM A 234		
94	ASTM A 234		
95	ASTM A 234		
96	ASTM A 234		
97	ASTM A 234		
98	ASTM A 234		
99	ASTM A 234		
100	ASTM A 234		

REV.	DATE	DESCRIPTION	BY
1	1/13/47	FINAL 'AS BUILT'	
2	1/23/47	AS BUILT	
3	1/23/47	AS BUILT	
4	1/23/47	AS BUILT	
5	1/23/47	AS BUILT	
6	1/23/47	AS BUILT	
7	1/23/47	AS BUILT	
8	1/23/47	AS BUILT	
9	1/23/47	AS BUILT	
10	1/23/47	AS BUILT	
11	1/23/47	AS BUILT	
12	1/23/47	AS BUILT	
13	1/23/47	AS BUILT	
14	1/23/47	AS BUILT	
15	1/23/47	AS BUILT	
16	1/23/47	AS BUILT	
17	1/23/47	AS BUILT	
18	1/23/47	AS BUILT	
19	1/23/47	AS BUILT	
20	1/23/47	AS BUILT	
21	1/23/47	AS BUILT	
22	1/23/47	AS BUILT	
23	1/23/47	AS BUILT	
24	1/23/47	AS BUILT	
25	1/23/47	AS BUILT	
26	1/23/47	AS BUILT	
27	1/23/47	AS BUILT	
28	1/23/47	AS BUILT	
29	1/23/47	AS BUILT	
30	1/23/47	AS BUILT	
31	1/23/47	AS BUILT	
32	1/23/47	AS BUILT	
33	1/23/47	AS BUILT	
34	1/23/47	AS BUILT	
35	1/23/47	AS BUILT	
36	1/23/47	AS BUILT	
37	1/23/47	AS BUILT	
38	1/23/47	AS BUILT	
39	1/23/47	AS BUILT	
40	1/23/47	AS BUILT	
41	1/23/47	AS BUILT	
42	1/23/47	AS BUILT	
43	1/23/47	AS BUILT	
44	1/23/47	AS BUILT	
45	1/23/47	AS BUILT	
46	1/23/47	AS BUILT	
47	1/23/47	AS BUILT	
48	1/23/47	AS BUILT	
49	1/23/47	AS BUILT	
50	1/23/47	AS BUILT	
51	1/23/47	AS BUILT	
52	1/23/47	AS BUILT	
53	1/23/47	AS BUILT	
54	1/23/47	AS BUILT	
55	1/23/47	AS BUILT	
56	1/23/47	AS BUILT	
57	1/23/47	AS BUILT	
58	1/23/47	AS BUILT	
59	1/23/47	AS BUILT	
60	1/23/47	AS BUILT	
61	1/23/47	AS BUILT	
62	1/23/47	AS BUILT	
63	1/23/47	AS BUILT	
64	1/23/47	AS BUILT	
65	1/23/47	AS BUILT	
66	1/23/47	AS BUILT	
67	1/23/47	AS BUILT	
68	1/23/47	AS BUILT	
69	1/23/47	AS BUILT	
70	1/23/47	AS BUILT	
71	1/23/47	AS BUILT	
72	1/23/47	AS BUILT	
73	1/23/47	AS BUILT	
74	1/23/47	AS BUILT	
75	1/23/47	AS BUILT	
76	1/23/47	AS BUILT	
77	1/23/47	AS BUILT	
78	1/23/47	AS BUILT	
79	1/23/47	AS BUILT	
80	1/23/47	AS BUILT	
81	1/23/47	AS BUILT	
82	1/23/47	AS BUILT	
83	1/23/47	AS BUILT	
84	1/23/47	AS BUILT	
85	1/23/47	AS BUILT	
86	1/23/47	AS BUILT	
87	1/23/47	AS BUILT	
88	1/23/47	AS BUILT	
89	1/23/47	AS BUILT	
90	1/23/47	AS BUILT	
91	1/23/47	AS BUILT	
92	1/23/47	AS BUILT	
93	1/23/47	AS BUILT	
94	1/23/47	AS BUILT	
95	1/23/47	AS BUILT	
96	1/23/47	AS BUILT	
97	1/23/47	AS BUILT	
98	1/23/47	AS BUILT	
99	1/23/47	AS BUILT	
100	1/23/47	AS BUILT	



- GENERAL NOTES
- ALL PIPING IN QUARTERS, MESS AND GALLEY, PUBLIC SPACES AND NAVIGATING SPACES SHALL BE CONCEALED.
 - ALL PIPING AND VALVES SHALL BE MARKED SHOWING.
 - ALL PIPING SHALL BE COLOR CODED IN ACCORDANCE WITH THE NATIONAL COLOR CODE AND SHALL INDICATE DIRECTION OF FLOW.
 - ALL SCREWS SHALL BE EMBOSSED AND ATTACHED.
 - ALL OVERBOARD DISCHARGES LOCATED ON PORT SIDE.
 - SEWAGE VALVES ABOVE SHALL HAVE RISING STEMS, OUTSIDE.
 - ALL PIPES SUBJECT TO MECHANICAL INJURY OR UNDESIRABLE VIBRATION SHALL BE ADEQUATELY PROTECTED AND/OR SUPPORTED.
 - PIPING SHALL BE THOROUGHLY CLEANED AFTER INSTALLATION AND BEFORE FUNCTION TESTING.
 - ALL SUBJECT PIPES TO BE PROTECTED BY ROSE BOX CLEARANCE OR BY A SOLE STRAINER TO BE 3 TIMES CLEARANCE OF THE PIPING.
 - PIPING OF DRAIN PLUMBING DRAINS SHALL BE ARRANGED FOR MAXIMUM DITCH.
 - ALL WATER CLOSET DRAINS TO BE VENTED.
 - ALL PIPING OVERHEAD IN GALLEY TO BE WELDED. NO SCREW JOINTS PER USPHS REQUIREMENTS.

REFERENCES

NO.	TITLE	DATE	BY
1	AUXILIARY MACHINERY FOUNDATION	9-29	
2	SEWAGE PUMP - BARNES 250, 3/4\"/>		